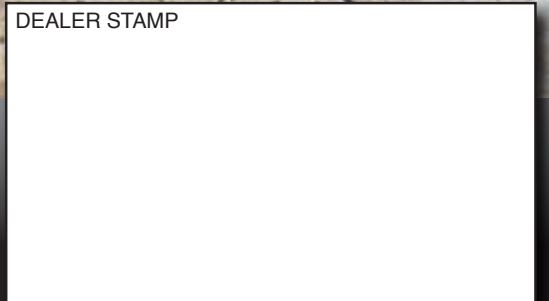


- Illustrations and data may differ from standard equipment.
- Specifications are subject to change without notice.
- See your ÇUKUROVA dealer for available options.



ÇUKUROVA MAKİNA İMALAT ve TİCARET A.Ş.
Adana Yolu PK.61 33470 Tarsus - Mersin/TÜRKİYE
Phone: +90 324 616 26 78 • Fax: +90 324 616 32 20
www.cumitas.com info@cumitas.com

DEALER STAMP



ÇUKUROVA

WHEEL LOADERS

940

Turbocharged John Deere Engine

Power 166 hp / 124 kW

Operating Weight 13,65 tons

Bucket Capacity 2,5 m³



Embodiment of POWER



SPECIAL FEATURES



Maximum comfort, Ease of operation, Low operating cost

The new generation Cukurova 940 model Backhoe Loader is designed to provide maximum comfort, ease of operation, low operating cost for the most demanding needs of operators. The affect of these three combinations can be seen in every detail of the machine, to exceed the customer expectations.

Hydraulic Operated Joystick Control

Hydraulic operated control valve enables operators to have smooth control and get precise movement.

Powerful Engine

Powering it with **JOHN DEERE 6068TF275 Stage II engine** provides 124 kW at 2,200 rpm. It's a turbocharged diesel which offers world-class performance and complies with all relevant environmental regulations. Its low fuel consumption and maintenance costs make the 940 even more attractive.

Roomy ROPS/FOPS Cab

Specially designed **ROPS/FOPS cab** provides perfect operating comfort, excellent visibility with tinted safety glass. Front and side control panels are all equipped with the latest technology and guides the operator to failures with the audible and visual warnings on main functions.

Automatic return to dig system

The 940 provides you with automatic return to dig system as standard to get max efficiency with reduced cycle times by leveling the loader bucket back to dig position with a pull of loader joystick.

OPERATORS ENVIRONMENT

Cab

- Specially designed ROPS/FOPS cab provides perfect operating comfort, excellent visibility, and reliability.
- Front and side control panels are fully equipped with the latest technology, the arrangement of controls are within easy reach, the audible and visual warning on main function guide operator for failures and adjustable steering column as standard gives extra driving comfort to the operator.
- Tinted safety glass improve visibility and sun visor protects operator against strong sunlight and ensures clear vision.



Seat

Adjustable operator's seat with safety belt can be adjusted to different body weights and heights to obtain comfortable ride and work.

Heating and ventilation

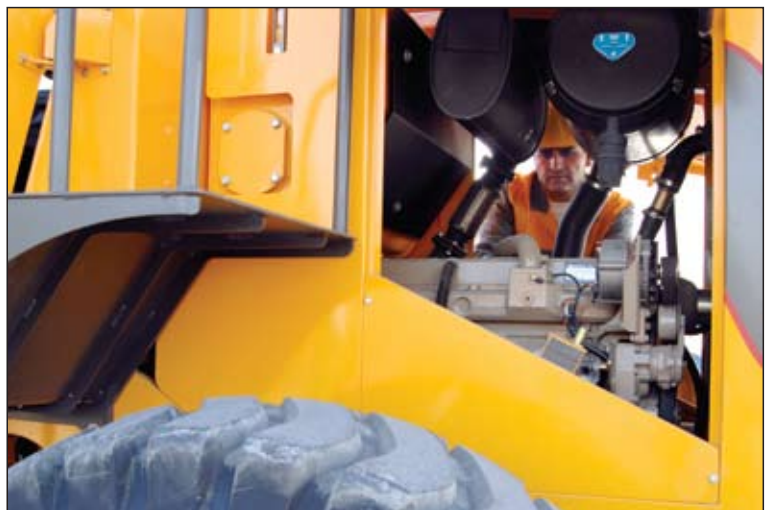
Fresh air heater/blower unit, full heating control system, defroster control with only one switch and AIR CONDITION are also existing as standard.

SERVICEABILITY

Ease of serviceability and quick reach from ground position.

Bolt type cylinder head design for quick replacement of cylinder seal kit during the overhaul of the machine to reduce the spare parts cost to a minimum.

All sealed pins and bushings extend the life time of the linkages of the attachments by preventing the entry of dust or blockages and increases the time between service periods.



CE marked - All safety measurements are taken through the Machinery Directives 98/37/EC

TECHNICAL SPECIFICATIONS

Engine

- Heavy duty design, high torque capability, powerful JOHN DEERE engine.
- Low fuel consumption and low maintenance cost.
- Environment friendly.
- Smooth engine operation with balancer shafts.
- Poly-vee fan drive with automatic belt tensioner.
- Dynamically balanced crankshaft
- Replaceable wet-type cylinder liners.
- Dry type air cleaner with primary and safety elements.

Make	John Deere
Model	6068TF275, Stage II
Type	4 stroke diesel, turbo charged
Rated power	124 / 166 kW/hp
Rated speed	2200 rpm
Displacement	6,8 L.
Bore and Stroke	106 x 127 mm
No of cylinders	6
Max. Torque	582 Nm
Balancer shaft	% 100 balance
Cooling	Engine oil cooler

Electrical system

Battery	24V / (12 V 120 Ah) x 2
Starter	24 / 7 V/kW
Alternator	24 / 45 V/A

Hydraulic System

- Closed Center System.
- Load sensing with axial piston pump.
- Hydraulic operated control valves enable operators to have smooth control and get precise movement.

System type	c-center
Hydraulic pump	Load sensing with axial piston pump
Max. Flow	210 l/min
Max. Press.	230 bar

Hydraulic cycle time

Raise	6,3 Sec.
Dump	1,6 Sec.
Lower	5,1 Sec.
Total	13,0 Sec.

Lift cylinder / double acting

Bore and stroke	130 x 160 x 696
-----------------	-----------------

Tilt cylinder / double acting

Bore and stroke	140 x 165 x 540
-----------------	-----------------

Cooling	Hydraulic oil cooler
Loader control	Hydraulic joystick control

Drive Train

Transmission:

- ZF powershift transmission.
- Transmission kick-down switch.
- Low noise and low internal speeds.
- High gear contact ratio.
- All helical gear design.
- Integrated clutch and lube oil supply.
- Vertical mount spin-on pressure filter.

Make	ZF
Type	Full Powershift, electronic autoshift
Gradeability	% 164,6
Max drawb. pull	116,8 kN

Travel Speeds

1st (forward/reverse)	6,50 / 6,50 km/h
2nd (forward/reverse)	13,00 / 13,00 km/h
3rd (forward/reverse)	24,00 / 24,00 km/h
4th (forward/reverse)	41,00 / - km/h
Cooling	Transmission oil cooler

Axles:

ZF Front Axle

- High input torque with planetary design.
- Self adjusting high torque internal wet multi disc service brake.
- Limited slip differential.

ZF Rear Axle

- High input torque with planetary design.
- Self adjusting high torque internal wet multi disc service brake.
- Limited slip differential.
- 20° total oscillation on front axle.

TECHNICAL SPECIFICATIONS

Brakes

- Self adjusting high torque internal wet multi disc service brake.
- Hydraulically foot operated service brake acted on four wheels.
- Electro-hydraulically actuated spring-loaded caliper disc brake.

2 wheel / 4 wheel	4 wheel
Service type	Hydraulic wet multi-disc
Parking type	Electro-hydraulic caliper disc brake

Steering

- Hydrostatic power steering.
- Load sensing system.

Steering Type	Articulated frame
Angle of frame articulation	33°
Outside turning circle	12 m
Inside turning circle	7,8 m

Loader Attachment

Bucket capacity	2,5 m ³
Breakout Force	132,8 kN
Lift to full height	6400 kg
Tipping load	15000 kg
Bucket width	2600 mm

Tires

Front	20,5 - 25 / 16 PRL3
Rear	20,5 - 25 / 16 PRL3

Weights

Operating Weight	13650 kg
------------------	----------

Cab

- ROPS (ISO 3741) - FOPS (ISO 3449) tinted safety glass giving total visibility, roomy and comfortable.
- Seat; adjustable to operator's weight.
- Heating and ventilation; fresh air heater/blower unit, full heating control system, defroster control with only one switch.
- Air condition as standard.
- Fully equipped instrument panels with the latest technology, audible and visual warnings on main functions.
- Height and tilt, adjustable steering column
- Excellent visibility with radiused tinted safety glass.
- Ergonomic controls.

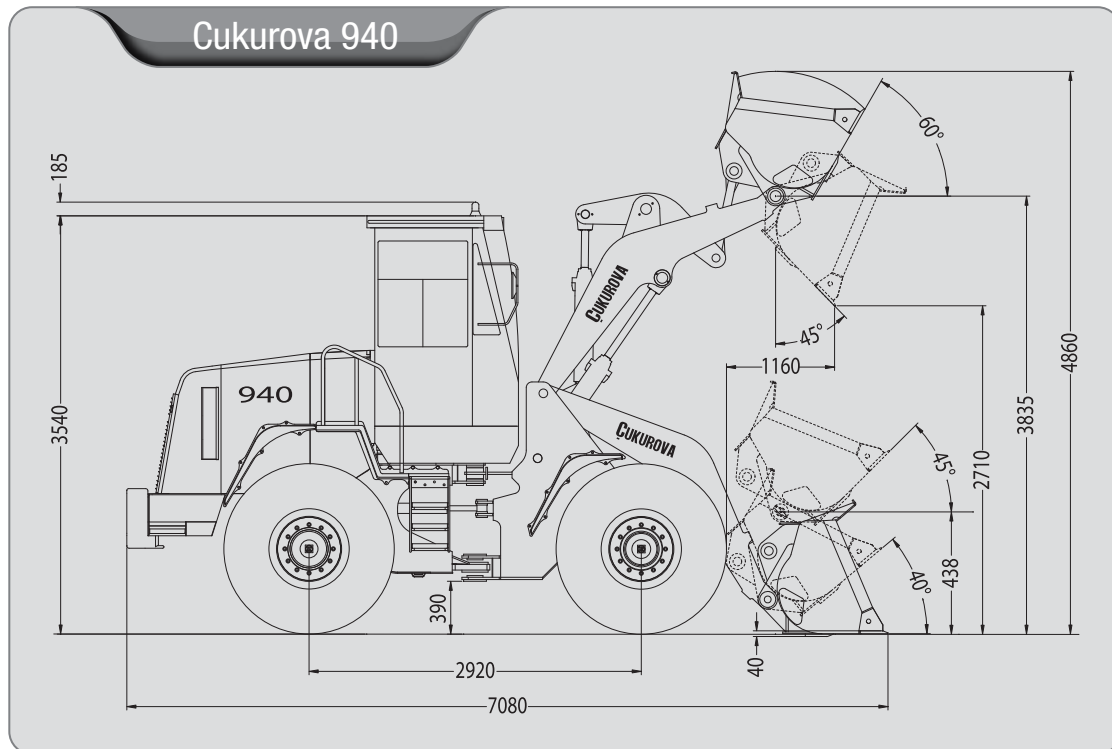
Capacities

	Liters
Engine Oil	19,0
Cooling System	38,0
Fuel Tank	200,0
Hydraulic Tank	180,0
Transmission oil	25,0
Front Axle	30,0
Rear Axle	30,0





DIMENSIONS



Operating height	4860 mm
Height to pin	3835 mm
Height to cab	3540 mm
Overall length	7080 mm
Dump angle	45°
Dump height	2710 mm
Reach	1160 mm
Maximum rollback (at ground)	40°

Carry position	438 mm
Maximum rollback (at carriage position)	45°
Maximum rollback (at full height)	60°
Digging depth	40 mm
Wheelbase	2920 mm
Overall height	3725 mm
Ground clearance	390 mm
Overall width (Over tires)	2575 mm
Tread width	2050 mm

EQUIPMENT

Standard Equipment

Engine

- Air filter, dry type and radial seal
- Service indicator warning lamp
- Turbocharged

Drive Train

- Service brakes enclosed wet disc full hydraulic and parking brakes electro-hydraulically actuated spring - loaded caliper disc brake
- Front axle, limited slip differential
- Rear axle, limited slip differential
- 41 km/h gearbox (full powershift)
- Shaft guard
- Transmission, 4F/3R autoshift single control and kick-down switch.
- Transmission neutralizer

Hydraulic System

- Hydraulic operated joystick control
- Load sensing hydraulic and steering system
- Flow sharing

Electrical System

- Alarm, backup
- Battery 24V / (12 V 120 Ah)x 2
- Front headlights
- Master switch
- Visual and audible warning systems on main functions
- Warning horn

Loader Attachment

- Automatic lift kick out system
- Automatic return to dig system

ROPS ve FOPS Cab

- Air condition
- Radio / Cassette Player
- Coat hook
- Defroster
- Door ventilation openers
- Front windshield washer and wipers
- Fully equipped instrument panel
- Interior light
- Left side door with lock
- Mirrors, interior and exterior (2)
- Storage compartment, internal
- Sunvisor
- Suspended adjustable seat with seat belt, armrest and headrest
- Rotating beacon (detachable)
- Steering wheel spinner knob
- Tiltable and height adjustable steering column
- Worklights, 2 front - 2 rear